



Twister™ is a new way to mechanically treat and maintain floors using traditional floor pads prepared with billions of microscopic diamonds.

Twister™ eliminates the use of cleaning chemicals for daily floor maintenance.



Cost efficient with high result

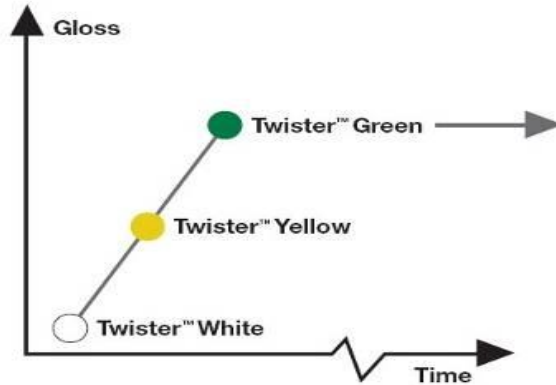


– easier, cheaper and faster cleaning process

- No or limited periodical maintenance
- No or limited use of chemicals
- One pad for all types floors



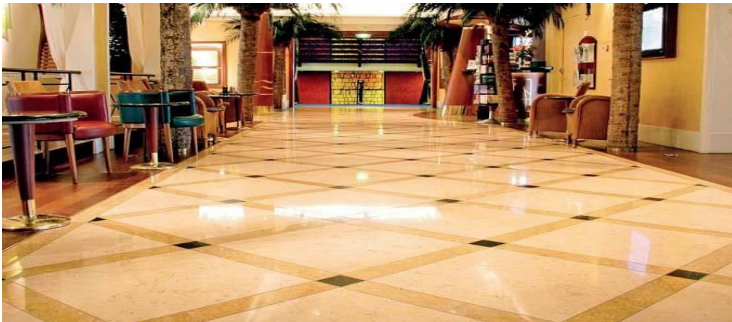
Quality over time



– clean floors with high gloss every day

The floor restoration process brings gloss and cleanliness to a high level (often gloss levels of 35-50)

Daily use of Twister™ Green pad preserves the gloss on the high levels “infinitely”



Twister™ for the environment



TWISTER™ – Good environmental choice



– eco friendly cleaning, just add water

- Reduced chemical usage – only water needed in daily cleaning
- No wax, polish or periodic maintenance is needed
- The Twister™ method is the first cleaning system recommended by the Swedish Society for Nature Conservation

Autoscrubbers



Walk behind- and single disk machines



– the same routine with better results

The Twister™ pads fit all types of machines and are available in a number of different sizes.

Twister™ replaces your regular pads and chemicals. Your regular cleaning routine remains the same.

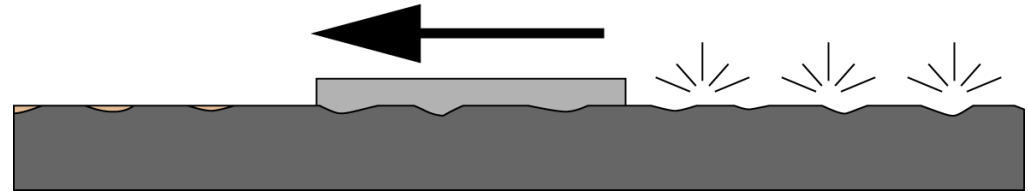
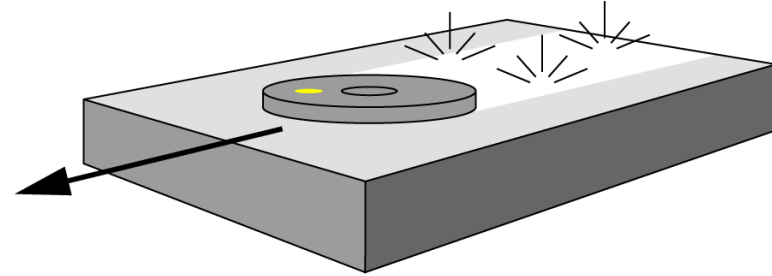
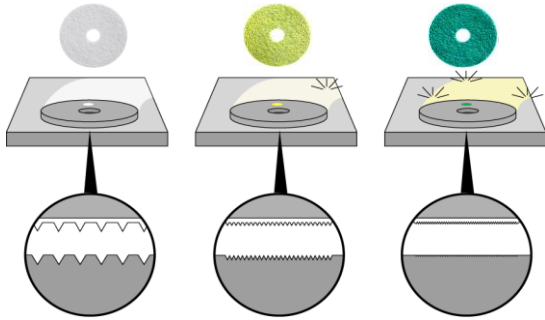
Twister™ is an effective method that saves time. In daily cleaning, one pass over the floor with Twister™ is enough, even on the most demanding surfaces!

How Twister™ works

The microscopic diamonds in each of the flexible Twister™ pads will effectively clean out the dirty and uneven parts of the floor.

The green Twister™ pad will also polish the floor which will bring back the natural shine and gloss of the floor.

Each pad carries a different size of diamonds



Standard Twister™ pads



Twister™ White

Step 1 for the Standard or Intensive Twister™ method. Twister™ White will remove tiny scratches from the surface and leaves a silky matt, cleaned and well prepared surface for the subsequent Twister™ steps.

Twister™ Yellow

Step 2 for the Standard or Intensive Twister™ method. This stage leaves a surface that is well prepared for the final step of the Twister™ method.

Twister™ Green

Final step for the Standard or Intensive method and also for daily maintenance of the floor. This step will effectively maintain a high gloss on the surface when used regularly. Twister™ Green is ideal for use on all floor surfaces such as stone, vinyl and linoleum floors. Green For high-speed polishing of terrazzo, natural stone surfaces and HTC Superfloor™

Heavy duty Twister™ pads



Twister™ Black

For heavy duty cleaning of stained industrial concrete surfaces. Removes oil, grease, soot and truck marks. Twister™ Black is the problem solver for the industry.

Twister™ Red

For heavy duty cleaning of industrial coatings and heavily worn stone floors . Twister™ Red will effectively remove scratches and stains from the surface and leave a clean, matt surface prepared for the standard Twister™ pads.

Twister™ standard upgrade process

The standard Twister™ upgrade process is performed using standard cleaning routines.

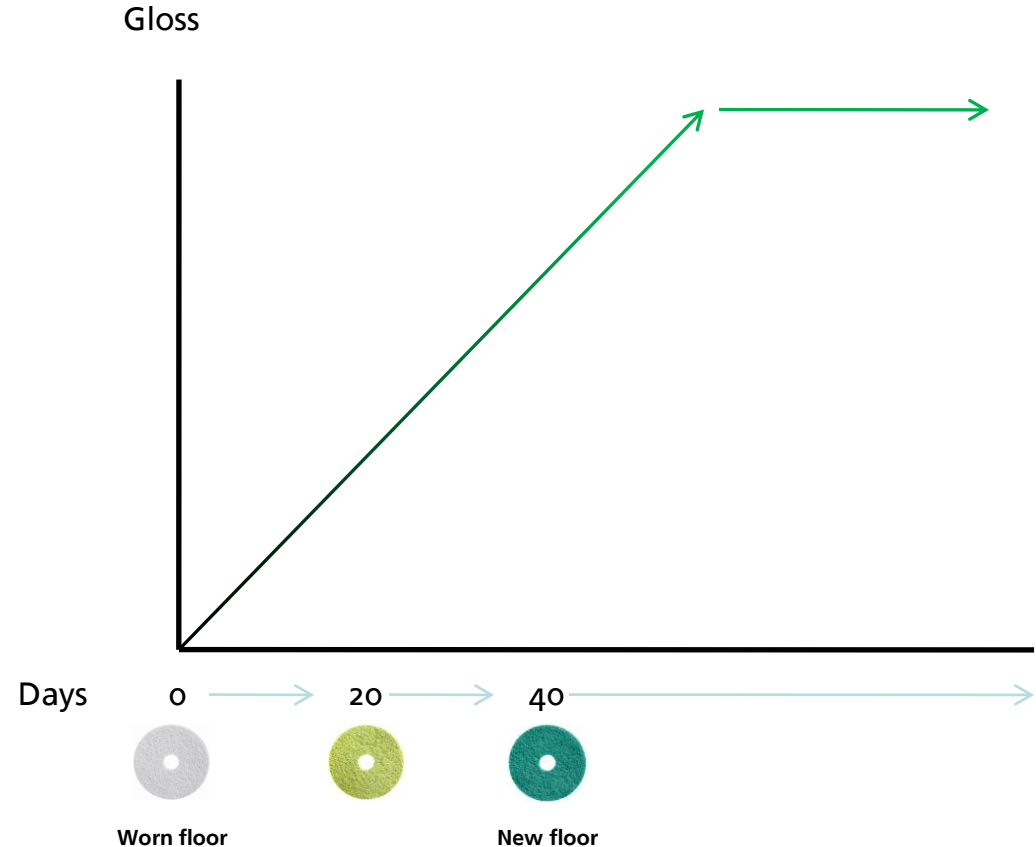
Each Twister™ step requires normally 2-3 weeks of operating with Twister Floor Conditioner for optimal result.

If extra high gloss is wanted, use Green Twister™ pad dry on a high speed machine after upgrade process is finished.

Note:

Twister™ is **primarily a system for daily floor maintenance** – where an initial upgrade of a worn floor is necessary to achieve high gloss and cleanliness!

If a high gloss is not requested, the final and daily pad to be used is yellow Twister™. The result will be a very clean but not so shiny floor.



Twister™ intensive upgrade process

Same process as Twister™ Standard upgrade process, but performed in one sequence.

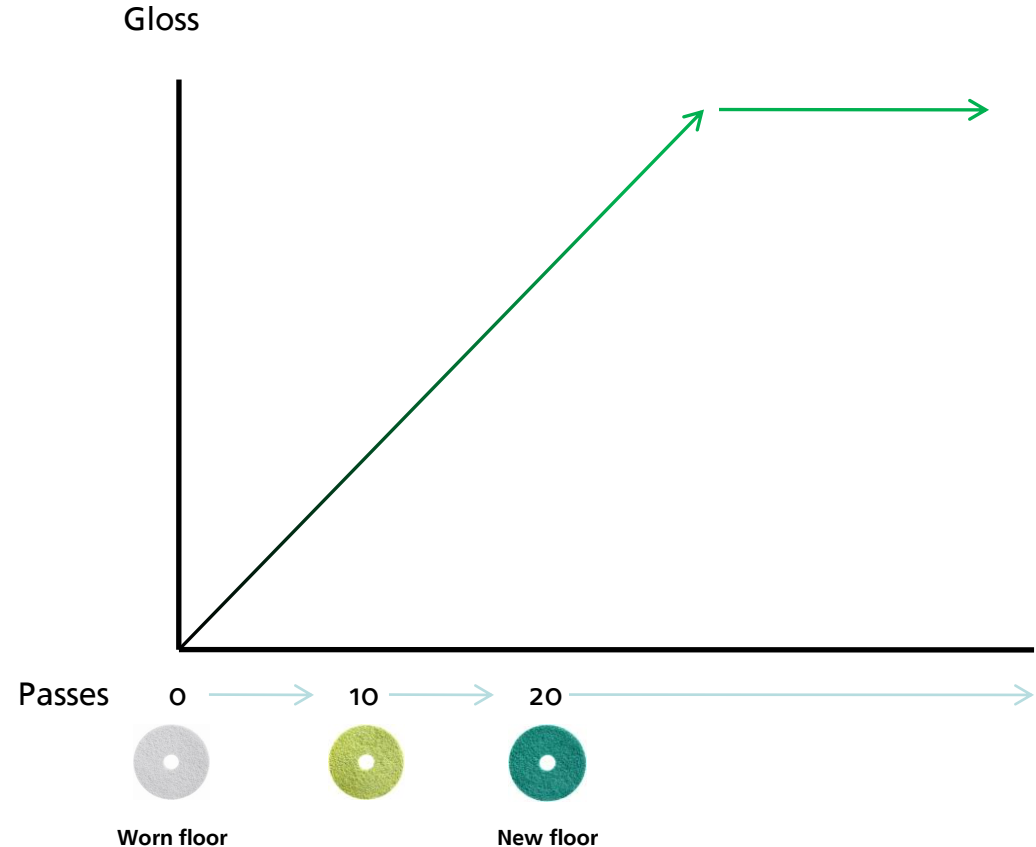
Approx 6-10 passes over the surface for each color of pad is needed for optimum result.
(depending on start conditions)

If extra high gloss is wanted, use Green Twister™ pad dry on a high speed machine after upgrade process is finished.

Note:

Twister™ is **primarily a system for daily floor maintenance** – where an initial upgrade of a worn floor is necessary to achieve high gloss and cleanliness!

If a high gloss is not requested, the final and daily pad to be used is yellow Twister™. The result will be a very clean but not so shiny floor.



Twister™ Floor Conditioner



Dosage 1:400

Water	Floor Conditioner
200 litre	5 dl
150 litre	4 dl
100 litre	2,5 dl
75 litre	2 dl
50 litre	1,25 dl
20 litre	0,5 dl

When performing an upgrade process of natural stone or terrazzo floor it is recommended that Twister™ Floor Conditioner is used.

For stone floors in bad condition, add a small dose of Twister™ Floor Conditioner to regain a deep and even gloss.

Environmentally safe, Twister™ Floor Conditioner is approved as a "Good Environmental Choice" by the Swedish Society for Nature Conservation.

Twister™ Floor Conditioner does not contain wax or polish.

Tarazzo upgrade guide



New or upgraded floors

Regular maintenance with the Green Twister™ pad will keep the clean and shiny result over time.

High Speed polishing with green Twister™ pad is effective for even higher gloss.

Start condition

Worn floor

Step 1



Step 2



Step 3



New floor

Marble & Limestone upgrade guide



New or upgraded floors

Regular maintenance with the Green Twister™ pad will keep the clean and shiny result over time.

High Speed polishing with green Twister™ pad is effective for even higher gloss.

Start condition

Worn floor

Step 1



Step 2



Step 3



New floor

Ceramic tiles upgrade guide



New or upgraded floors

Regular maintenance with green Twister™ pad
will keep the clean result over time.

Start condition
(Unglazed tiles)

Worn floor

Step
1



Step
2



Step
3



Step
4



New floor or
glazed ceramic
tiles



Vinyl upgrade guide



New or upgraded floors

Regular maintenance with green Twister™ pad will keep the clean and shiny result over time.

High Speed polishing with green Twister™ pad is effective for even higher gloss.

Note: On vinyl and other plastic floors the upgrade process is performed only by using water.

Start condition

Worn floor

Step 1



Step 2



Step 3



New floor



Resin floor maintenance guide



New or upgraded floors

Twister™ will effectively clean and improve the quality of floors with resin coatings such as Epoxy.

Note: On epoxy and other resin coated floors the upgrade process is performed only by using water.

Worn floor
or heavy
traffic



New floor or
light traffic



HTC Superfloor™ maintenance guide



Twister™ on HTC Superfloor

Twister™ is the only approved and working maintenance method for HTC Superfloor™.

Regular maintenance with green Twister™ pad will preserve a clean surface with a high gloss and eliminate the need for re-polishing of the floor.

Description/how to recognize

HTC Superfloor™ is diamond polished concrete.

The raw concrete surface has been grinded and polished up to seven steps with the use of HTC Floor Grinding Machines and Diamond tools.

HTC Superfloor™ is recognized through high gloss and exposed concrete aggregate. HTC Superfloor™ is suitable both for industries and public areas.

High wear

NOTE!

A worn down HTC Superfloor™ requires mechanical polishing/renovation with HTC grinding machines.

New floor



DCS Hybrid™



DCS Hybrid is a new light-grinding method to be used together with standard cleaning machines and will bring a high quality result at a very low cost.

DCS Hybrid effectively renovates a heavily worn and uneven natural stone- and terrazzo floor. (Deep scratches, stains, orange peel etc.)



DCS Hybrid™ Diamond Segments



Brown segment



Blue segment

DCS Hybrid™ Star-Pad and Velcro holder



Twister Star-Pad



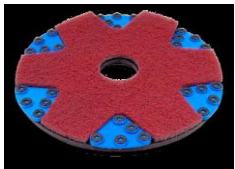
Velcro holder

- The DCS Hybrid system consists hard diamond segments in two different colors, brown and blue, in combination with a diamond impregnated Twister star-pad and a soft Velcro holder.
- A complete set-up of DCS Hybrid consists of 6 segments, one Twister star-pad and one velcro holder. If run under an Autoscrubber, two complete sets is used.

DCS Hybrid™ Renovation Process

Start by attaching the star-pad to the velcro holder, attach the brown tools (stage 1) and mount on the selected cleaning machine. After 10 passes, change to the blue tools (stage 2) and repeat the process.

Always follow up with the Standard Twister pads according to the Upgrade Guide for Terrazzo or Marble/Limestone.



Gloss

Even Floor Surface

Uneven Floor Surface

Passes

