

USER GUIDE **BBW 2020**



- USER GUIDE
- GUIDE DE UTILISATION
- MANUAL DE USO
- BENUTZERHANDBUCH
- GEBRUIKERSHANDBOEK



MANUAL FOR (Playpen) BALL WASHING system BBW2020

CONTENTS:

1. Specification
2. Manual for :
 - a) Removal of packaging and installation.
 - b) Operating the suction unit.
 - c) Operating the suction unit in combination with the washing unit and ballnetting system.
 - d) How to clean the ball-cleaner
3. Safety
4. Spare parts accessories
 - a) Exploded view
 - b) Position and articlenumber list
5. Service
6. Garantie

Video instructions:



1.

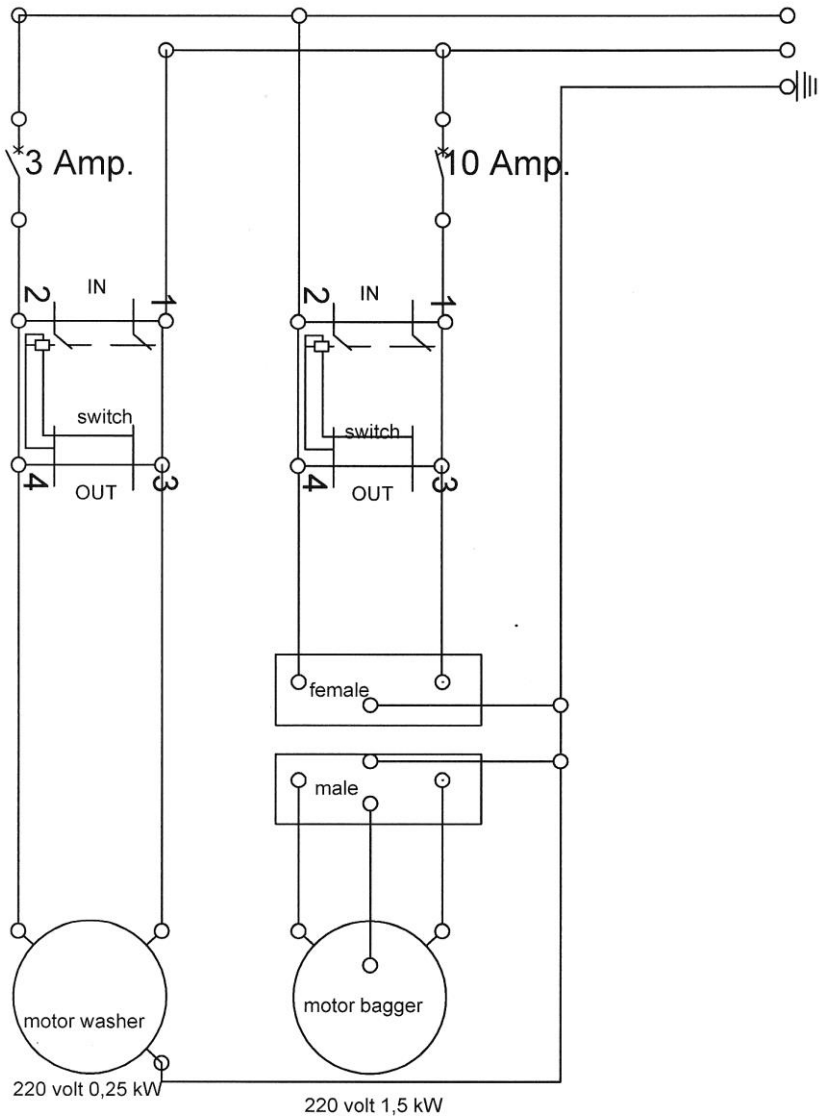
TECHNICAL SPECIFICATION TYPE:BBW-2020

	Suction unit-BZU 6/8	Wash unit-BWU 6/8
Motor	AC Mains	AC Mains
Type	EM-1500	RMI28FL-IEC63/B14 M63 C/2
Voltage	220-240V 50/60Hz. 1Ph	220-240V 50/60 Hz. 1Ph
Capacity	1,5 kW	0,25 kW
RPM	2850	2800
Reduction		1 : 20
Motor housing	IP 44	IP 55
Brush rotation a min.		140
Max. dia. balls in cm	7,5 and 8 cm	Brushes for 7,5 or 8 cm
Capacity balls per min.	1.000	250
Capacity Wash unit ltr.		100
Measurements (cm)		
LengthxWidthxHeight	integrated	130 x 65 x 115
Weight		60 kg

The ballcleaner consists of 3 main items/parts :

- a) Flexible suction hose transparent BZSU 6/8
- b) Wash unit with integrated suction unit BWU 6/8
including ballnetting system
- c) Filling pipe unit transparent BVU 6/8

wire diagram BBW 2015



2)MANUAL

a) Removal of packaging and installation

1. Remove all packaging and check with the order sheet that all parts are included (you can also use the specification sheet in this manual).
2. Check that the mains on your premises is 220-240V, and that your plugs are fitted with a 16 amp fuse and properly earthed.
3. The washing machine and suction unit will only function properly if connected to the electrobox with electromagnetic switches and Emergency STOP.
4. The suction-unit however, can be used as a unit on its own, as well as in combination with the wash-unit.
5. Make sure that :
 - a) You are on a level surface.
 - b) You are able to drain the container after use.
 - c) You are able to fill the container.
 - d) There is a suitable power supply nearby.
 - e) There is enough space to be able to work properly.
6. The most efficient way of operating the ball-cleaner depends on :
 - a) the room where the ball-pool is situated
 - b) access to the room and the ball-pool.

It is therefore impossible to describe the most efficient working method as each situation is different.
7. We designed the ball-cleaner in such a way that, with the 3 main parts, it is possible to adapt the cleaning process and machine layout to most working situations.

b) Operating the suction unit.

With the flexible suction hose and the suction-unit, it is possible to empty the ball-pool and collect the balls into a net.

c) Operating the suctionunit in combination with the washunit and ballnetting system.

1. After you made sure that all the checks we've mentioned before are made, and you adapted the machine layout to your specific needs, you are than ready to begin with the cleaning process.
2. Fill the container with cold water up to the marking inside the container on exit plate (18), and add the detergent to the water. We strongly recommend our own detergent **Wash&Gloss** as this is developed and tested for the use in combination with the ball-cleaner. The right dosage is 200ml for 1 session. If you are intending to use another detergent than the one we supply for the use with the ball-cleaner, we cannot garantee good results.
3. Place the ballnetting frames in the holders.
Attention : there is a left and a right holder ! Attach the nets to the frames and swing one of the 2 frames in front of the ball exit. Insert the drying cloth between the edge of the lid and the water container and let it hang inside the net. Switch on the suction unit and the washing unit. When the first net is full, cover the ball exit with the cloth. This will prevent balls coming out while you change the net.
4. Start to suck the balls into the flexible suction-hose, and make sure that you don't overload the hose with too many balls, as this will block the airflow.
5. **The correct way of operating the ball-cleaner is to ensure that the right balance between suction and cleaning is achieved.**
6. As with all things : "practice makes perfect"; so also with operating the ball-cleaner. However, if you make sure that you follow the guidelines mentioned, you'll achieve the right result quickly. The balls should still be slightly wet in order to allow the detergent to work during at least 15 minutes.
7. After you've finished cleaning, there will be some balls left in the unit.
You can remove these balls by hand.
7. After use, you empty the wash-unit with the water-out hose, outside the machine. Never leave remaining water in the wash-unit after using the machine.
8. Unplug the units from te mains when not using the machine, and detach the hoses from the units and store these in a safe place.
9. Keep detergents out of childrens reach. Always store in a safe place when not in use



d) How to clean the ball-cleaner

1. To ensure a good working of the ball-cleaner, always clean the wash-unit after you used it, as this is common sense hygiene practice. Any chemical pollution that is in the water, will be neutralised by the detergent and will be removed when draining the unit. Blocking of the grid in the suction unit, will mainly come from dust and particles of clothing materials, paper and broken balls.
2. Make sure that you unplug the units before cleaning starts. The best way of cleaning the grid in the suction unit is by cleaning it with a vacuum cleaner.

Wear rubber gloves to clean the brush and proceed as follows :

- unplug the machine
- disconnect the bagger connection
- detach the dispenser cap from the unit and release the 4 catches that secure the top (8)
- lift (with 2 pers.) the top of the unit in an angle of about 45 degrees, until the brush is completely free of the unit.
- turn the top upside down and place it on top of the unit with the brush in the air
- remove all foreign particles from the brush.

To remove dirt from the bottom of the wash-unit :

- remove the entry plate (16) and the exit plate (18) from the unit.
- You have now easy access to clean the container.

To assemble the unit : do this in the reverse order as mentioned above.

3) For cleaning the poly-ethylene parts :

- use a detergent with a low ph level or the Wash& Gloss detergent.



LIFT the lid only diagonally

3. SAFETY

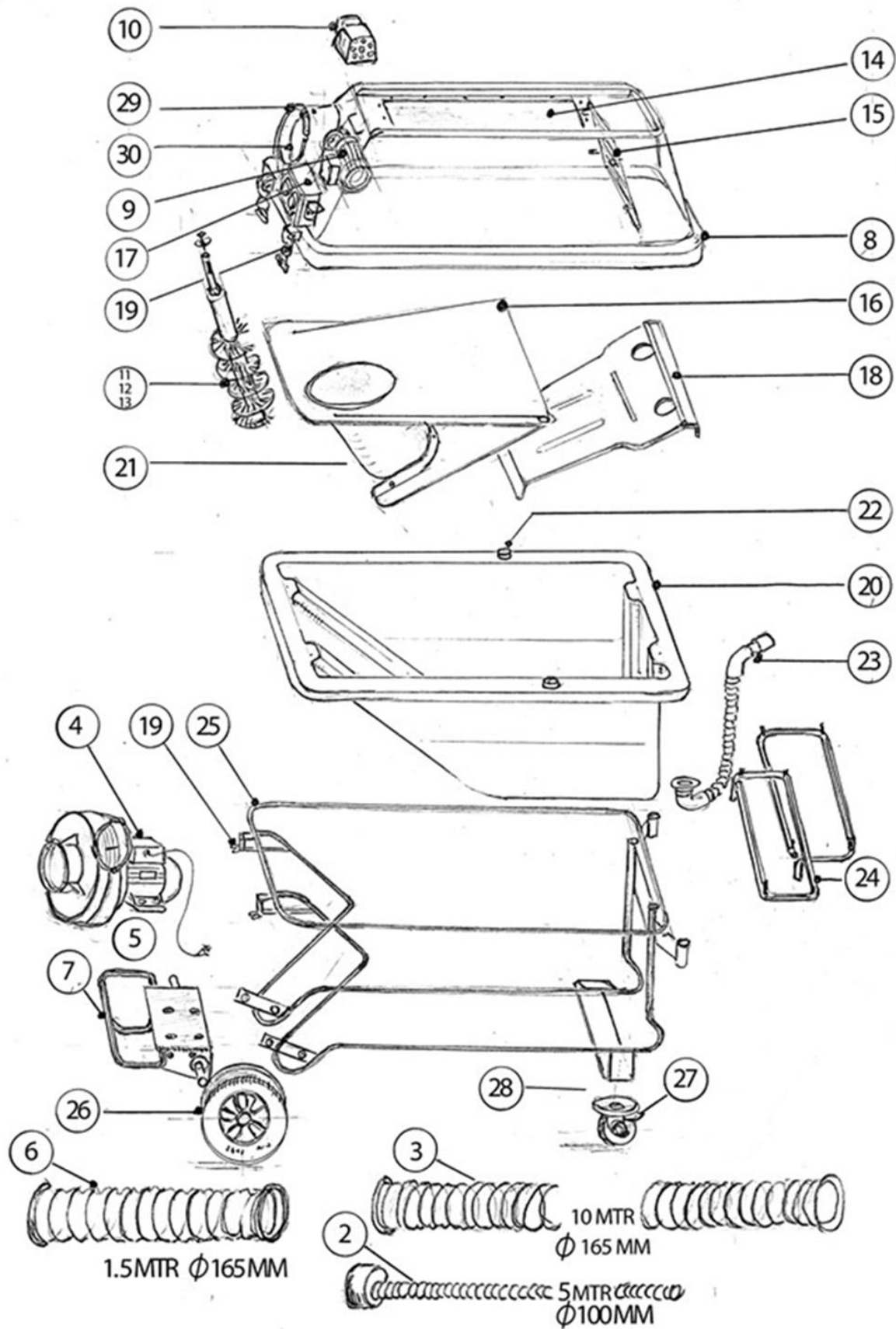
Make sure that the persons operating the ball-cleaner are competent, and familiar with all safety aspects of the ball-cleaner. For information : please contact your dealer. However, if you follow the guidelines mentioned below, you'll be operating the ball-cleaner in a safe manner.

Please always make sure that you :

- 1) Never use the ball-cleaner for any other purpose than for cleaning PE-balls
- 2) Never use a different detergent than we supply, as we cannot guarantee a good result
- 3) Do not leave the ball-cleaner un-supervised in a "ready for operation" state, or already working
- 4) Do not leave detergents within reach of children
- 5) Always use a small-socket with a ground terminal which is connected to an earthleakage switch.
- 6) Take the plugs out of the socket by holding the plug, and never by pulling the cable. Check the cables regularly.
- 7) Never use spare parts other than supplied by us.
- 8) Never have any repairs or maintenance carried out by unauthorised __ people, other than approved by us.
- 9) Never leave a machine filled for later use.(The products used lose their efficacy and are toxic in case swallowed.)
- 10) Never fill the machine higher than the slit on the exit plate (18) !!

4. SPARE PARTS AND ACCESSORIES

1. If, in your situation, you're not able to achieve a layout with the supplied standard parts, then consult your dealer. In most cases it will be possible to adapt the hoses to your needs.
 2. In this manual you will find drawings of all parts of the ball-cleaner type BBW-2020 ; in the list under "articles" you'll find the position number and article number.
-



Articlenumberlist type BBW 2020

Nr.	Description	Artikel Nr.	
SUCTION-HOSE :BZSU			
1.	xxxx	xxxxxxxxx	
2.	Hose transparent 5 Meter diam 110mm	BZSU.002	
3.	Hose transparent 10 Meter diam 165mm	BZSU.003	
SUCTION-UNIT+ transporthose :BZU			
4.	Suction unit complete excl. hose	BZU.004	only complete unit as separate part
5.	Mounting Bolts	BZU.005	
6.	Transporthose 1 ½ meter diam165mm	BVU.006	
BALL-WASHING-UNIT:BWU			
7.	Sub Frame	BWU.007	
8.	Washing machine lid	BWU.008	
9.	Motor + Gearbox + reset	BWU.009	
10.	Motorlid + attach mat.	BWU.010	
11.	Brush 60 mm Balls	xxxxxxxxx	
12.	Brush 75 mm Balls	BWU.012	
13.	Brush 80 mm Balls	BWU.013	
14.	Lexanplate	BWU.014	
15.	Separation grit	BWU.015	
16.	Cilinderunit	BWU.016	not available as sparepart
17.	Electric box	BWU.017	
18.	Exit plate	BWU.018	
19.	Lid fastners 4 x	BWU.019	
20.	Container PE 180 liter	BWU.020	
21.	Cilinder	BWU.021	
22.	Fixing rubber	BWU.022	
23.	Water-out	BWU.023	
24.	Inox netholders right & left	BWU.024	
25.	Main Frame	BWU.025	
26.	Wheels 2x	BWU.026	
27.	Caster wheels 2x	BWU.027	
28.	Mounting Bolts	BWU.028	
29.	Quick release clamp	BWU.029	
30.	Metall Connector l=70mm	BWU.030	

ACCESSORIES extra or separate to order:

Nets per 100
 Transparant hose 5 meter diam165mm (minimum)
 Extra brush
 WASH&GLOSS detergent 5 liter
 (25 wash-sessions) (2 cans minimum)

xxx no longer available

5. SERVICE

The Van Veen Design ball-cleaner is made according to the highest standards in technology and construction. We recommend the ball-cleaner to be serviced once a year by an authorised dealer, so as to ensure a long and problem-free use of the ball-cleaner.

Frequent use of the ball-cleaner may result in more frequent servicing. We recommend to consult your dealer about the required servicing intervals. If you want to order any spare parts, please contact your dealer.

We can ensure a speedy service if you are able to supply your dealer with a serial number of your cleaner (see I.D. plate on your machine or this manual) and the article number of spare parts.

6. GARANTEE

We guarantee that all our products are made out of quality materials and manufactured according to the highest standards. In case of malfunction of the product supplied by Van Veen Design through material and/or manufacturing faults, then Van Veen Design will do its utmost to rectify the problem, by replacing any faulty parts or exchanging the entire product if and when necessary. Any warranty claims by the customer are to be subjected to the following conditions :

1. The warranty is only available to the first buyer of the product i.e. when the product is bought when new, and when it has an ID plate with a serial number supplied by Van Veen Design. The warranty period is to be 1 year from the time of purchase, unless otherwise agreed in writing by Van Veen Design.
2. Any repairs and/or alterations to products under warranty, will be done at the premises of the user, or Van Veen Design's premises, or a third party appointed by Van Veen Design.
3. Warranty claims will only be met if :
 - a) the machine has been used according to the guidelines set out in the manual
 - b) the product has been maintained according to Van Veen Design's service procedure
 - c) there is a proof of purchase, stating type- and serial number
4. The warranty period on any spare parts is 30 days, after the date of repair. For spare parts delivered seperately, the warranty period will be 8 days after reception by the user.
5. The warranty agreement will be declared void by Van Veen Design when :
 - a) the product has been damaged through wrongfully handling in transport i.e. dropped/banged or through basic negligence by the user
 - b) the machine has been used for purposes other than for what it has been designed to do
 - c) the damage occurred when accessory parts have been improperly assembled to - or disconnected from - the product. Excluded from warranty are : all tubes, electric cables, plugs, suction hoses and brushes. Any claims for travelling-, hotel- and transport costs are also excluded.
6. Van Veen Design is not responsible for any claims of damages in any form.
7. The problems or shortcomings as described hereabove will under no circumstance cancel the sale agreement.
8. All parts that are replaced under guarantee will be returned and will belong to Van Veen Design.

